

A NEW SPECIES OF *THERIDION* WALCKENAER (ARANEAE : THERIDIIDAE) FROM INDIA¹

KANCHAN MONGA² AND J.P. SINGH³

(With three text-figures)

***Theridion* Walckenaer, 1805.**

Theridion Walckenaer, 1805. Tabl. Aran.: 1-88.

Anterior median eyes equal to or smaller than posterior medians which are usually a little wider apart, laterals contiguous. Chelicerae usually weak. Sternum rounded behind, projecting between coxae IV. Legs long and thin; tarsus IV with a row of 6-10 serrated bristles. Abdomen globular in shape, usually bearing a distinct pattern.

***Theridion sadani* sp. nov.** (Figs. 1-3)

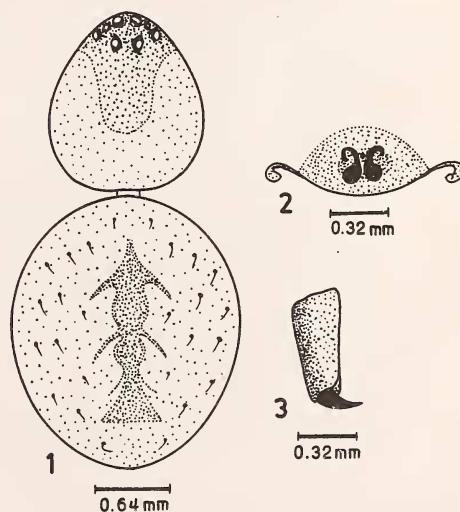
Female cephalothorax : Carapace : length

wide, concave and yellow in colour. Chelicerae: small, yellow without any teeth on any margin. Maxillae: yellow, broader at base, narrower towards anterior end, a few hairs present at anterior margin. Labium : yellow, not re-boardered. Sternum : yellow, longer than broad, posterior end narrowed and extending between coxae IV. Legs : yellow, long and thin, tarsus IV with a row of 6 spines on ventral side, tarsi with three claws and without any claw tufts. Leg I thrice the length of body. All legs provided with papillae. Length of legs (mm):

| Leg | Coxa | Trochanter | Femur | Patella | Tibia | Metatarsus | Tarsus | Total |
|---------------|------|------------|-------|---------|-------|------------|--------|-------|
| I | 0.50 | 0.30 | 3.40 | 0.73 | 3.00 | 3.00 | 1.03 | 11.96 |
| II | 0.33 | 0.27 | 2.27 | 0.67 | 1.60 | 1.66 | 0.77 | 7.57 |
| III | 0.37 | 0.20 | 1.37 | 0.59 | 0.87 | 1.07 | 0.53 | 5.00 |
| IV | 0.40 | 0.33 | 2.33 | 0.63 | 1.63 | 1.93 | 0.77 | 8.02 |
| Pedi- palp | — | — | 0.43 | 0.10 | 0.27 | — | 0.50 | 1.30 |

1.68 mm; maximum breadth 1.44 mm; yellow with cephalic region marked from thoracic region by light cephalic groove; thoracic region marked with transverse thoracic fovea. Eyes eight, encircled by black rims; anterior medians darker than the rest of the eyes and equal to posterior medians; arranged in two rows; anterior row recurved while posterior row procurved. Diameter of eyes (mm): A.M. = 0.12; A.L. = 0.11; P.M. = 0.12 and P.L. = 0.09. Mutual distances between the eyes (mm): A.M.-A.M. = 0.16; A.M.-A.L. = 0.15; A.M.-P.M. = 0.17; A.M.-P.L. = 0.20; P.M.-P.M. = 0.20; P.M.-P.L. = 0.19; P.L.-P.L. = 0.49 and A.L.-A.L. = 0.47. Width of clypeus: 0.22 mm,

Figs. 1-3. *Theridion sadani* sp. nov.
1. Dorsal view of female; 2. Epigynum; 3. Chelicera.



¹Accepted August 1988.

²Haryana Agricultural University, Hissar, Haryana (India).

³Department of Zoology, Punjabi University, Patiala, Punjab (India).

Abdomen: Length 2.40 mm; maximum breadth 2.20 mm; oval but rounded behind. Dorsum grey, mottled with white that forms a pattern with grey veins in the centre. Venter grey with white markings, covered by papillae all over. Spinnerets compact. Epigynum as in Fig. 3.

Total length: Female 4.08 mm.

Holotype Female, in spirit, INDIA: Jammu and Kashmir; Shalimar Gardens, Srinagar, 25.v.1977, G.L. Sadana.

This species slightly resembles *Theridion tikaderi* Patel but can be separated from it as follows (i) Absence of U-shaped mark on cephalothorax, (ii) The abdomen is oval, grey,

mottled with white and forming a pattern with grey veins in the centre, while in *T. tikaderi*, abdomen is globular and dorsal and ventral sides are with chalky white and chocolate patches, (iii) Epigynum is also structurally different.

ACKNOWLEDGEMENTS

We thank Dr. G. L. Sadana, Department of Zoology, Punjab Agricultural University, Ludhiana for providing the collection and Professor and Head, Department of Zoology, Punjabi University, Patiala for providing the necessary laboratory facilities.

A NEW *SONERILA* ROXB. (MELASTOMATACEAE) FROM SOUTHERN INDIA¹

R. GOPALAN AND A.N. HENRY²

(With nine text-figures)

Sonerila Kanniyakumariana sp. nov.

Herbae succulentae, 50-65 cm altae; caules subrosei, erecti (nodi inferi rare decumbenti et radicanti), minute alati, glabri. Folia 0.5 - 4.2 x 0.5 - 2.5 cm, superi subsessiles, inferi breviter petiolati, ovati ad deltoidi, succulenti, glabri, ad apicem acuti, ad basim cordati vel subcordati, 3-5-nervati; margines serrati, hyalini. Racemi terminales, scropioidei, floribus 3-5, flori subrosei; pedunculi 5-7 mm longi, glabri. Calycis tubi 5-8 mm longi, infundibuliformes, glabri; calycis lobi 3, utrumque c. 3 x 2 mm, triangulare. Petala 3, utrumque usque ad 1.5 cm latum, ovato-orbiculare, apiculatum. Stamina 3; filamenta c. 5 mm longa, crassa, glabra; antherae lanceatae, usque ad 6 x 2 mm, rostratae. Stylus 10-12 mm longus; stigma capitellatum. Capsulae 8-10 x 4-5 mm, infundibuliformes, glabrae; semina c. 1 mm longa, tuberculata.

Holotypus (Gopalan 77180, CAL) et isotypi (Gopalan 77180, MH-num. acc. no. 139866 - 139874) in Upper Kodayar in ditione Kanniyakumari in statu Tamilnadensi, India, die

20.3.1984 lecti. Paratypi (Henry 77001, MH-num. acc. no. 139875 - 139883) in Upper Kodayar, versus viam ad Muthukuzhivayal, die 16.2.1983 lecti.

Succulent herbs 50-65 cm tall; stems pinkish, erect (rarely decumbent and rooting at lower nodes), minutely winged, glabrous. Leaves 0.5 - 4.2 x 0.5 - 2.5 cm, upper subsessile, lower shortly petioled, ovate to deltoid, fleshy, glabrous, acute at apex, cordate or subcordate at base, 3-5 nerved; margins serrate, hyaline. Flowers pinkish, 3-5 in terminal scorpioid racemes; peduncles 5-7 mm long, glabrous. Calyx tube 5-8 mm long, funnel-shaped, glabrous; calyx lobes 3, each c. 3 x 2 mm, triangular. Petals 3, each up to 1.5 cm across, ovate-orbicular, apiculate. Stamens 3; filaments c. 5 mm long, thick, glabrous; anthers up to 6 x 2 mm, lanceate, beaked. Style 10 - 12 mm long; stigma capitellate. Capsules 8 - 10 x 4 - 5 mm, funnel-shaped, glabrous; seeds c. 1 mm long, tuberculate. (Figs. 1-9).

Holotype (Gopalan 77180, CAL) and isotypes (Gopalan 77180, MH-acc. no. 139866 - 139874) were collected at Upper Kodayar in Kanniyakumari District, Tamilnadu on

¹Accepted November 1987.

²Botanical Survey of India, Coimbatore (India).